

IoT & Environment Monitoring



HW group Distribution Switzerland

Jens Albrecht

B.Sc. Electrical Engineering
Presales Cyber Security / IoT

jens.albrecht@ingrammicro.com

Direct 079 287 36 43
Office 041 784 33 00

Brunnmatt 14
CH-6330 Cham



HW group - COMPANY OVERVIEW

ABOUT HW GROUP

*Czech manufacturer IoT devices
with 18 years of experience.*

HW group s. r. o.
Formanská 296
149 00 Praha 4
Czech Republic
www.hw-group.com

- Privately owned company (1 owner)
- 40+ distributors worldwide
- 40 000+ smart IoT units sold per year
- Premium products and support
- Focused on quality and compatibility
- Large product ecosystem
- R&D and manufacturing in the Czech Republic



Time	AC 58	Canada	89 Ave NW, Edmonton	WLD	2
10:30:29	29000001	India	Naig Rd 29, Nágpur	45.3	%Flt
10:30:26	302871441	Japan	7-13-5 Nishi-Shinjuku, Tokyo	24,6	°C
				0	none unit

Company & Products

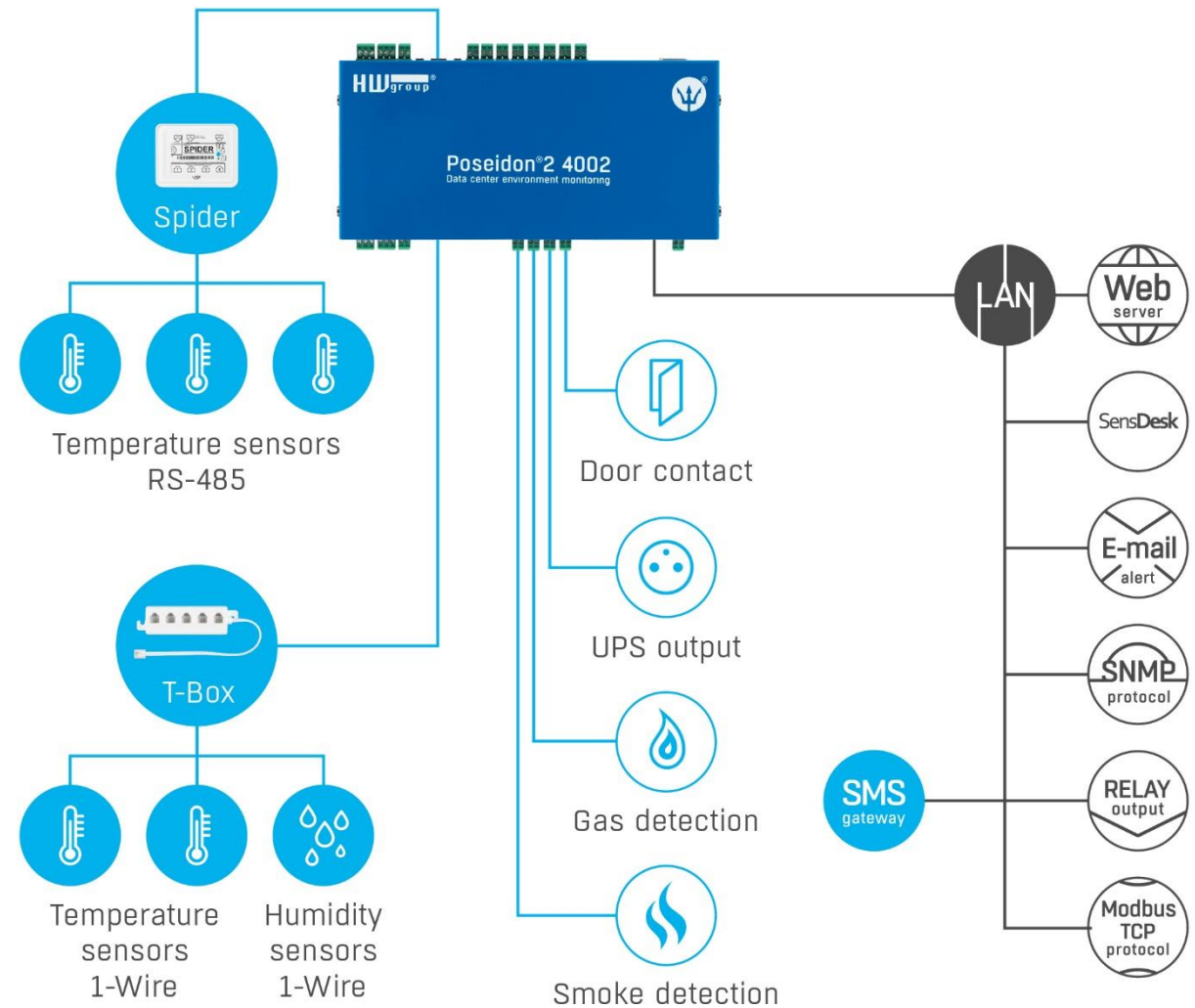


IoT SYSTEM

HWg SYSTEM

Full range of products from the sensors to the software and portal.

- Full ecosystem of products
- Simple topology and wiring
- Low integration costs
- Immediate availability of measured data
- Remote management of devices
- Stable and duplex connection
- Secure and compatible



SENSORS

Many options to fit all installation needs.

- Portfolio of over 100 sensors
- Industrial precision and quality testing
- 1-wire / 1-wire UNI / RS-485 / binary
- Cable, rack mount, wall mount, DIN rail...



DEVICES

Simple one task devices or complex monitoring units.

- Devices are autonomous, some require a portal
- Ethernet, WiFi, GPRS, GSM, LTE
- Battery powered NB-IoT devices
- LTE – M ready
- Alarming over SNMP, E-mail, SMS, MQTT, remote outputs, Modbus TCP, HWg Push...





SENSDESK PORTAL

IoT monitoring portal that you can resell.

- Robust technology
(SensDesk.com - over 50000 sensors)
- 9 years of development and testing
- Available online or as a virtual image and hardware

SensDesk
IOT PORTAL BY HW GROUP

Login: John Newman | Help | My account | License | Log out

Dashboard | My Dashboard | Sensors & Detectors | Devices | Groups | **Locations** | My Graph

SensDesk > Locations

Locations

Machine
Simple se
all HWg c
protocol i

Sensor in alert

Solution

Prague - Jažlovická
138 Sensors

65 ✓
27 !
37 ?
9 ✕

8 Sublocations

Sublocations	Sensors
Not Assigned	10
Storage	1
1. Floor	3
2. Floor	2
3. Floor	1
Dock	5
Cabin	1
Office	1
Server room 2. floor	1

10 Devices + Add Device

Milan - Via Monte Velino
58 Sensors

38 ✓
12 !
2 ?
6 ✕

6 Sublocations

Sublocations	Sensors
Not Assigned	2
Stock	2
Freezer room	1
Server room	3
Server room 2	1
1. Floor	1
2. Floor	1

8 Devices + Add Device

Göteborg - Eklandagatan
57 Sensors

42 ✓
5 !
9 ?
1 ✕

2 Sublocations

5 Devices + Add Device

Create new Location

+ Add Device

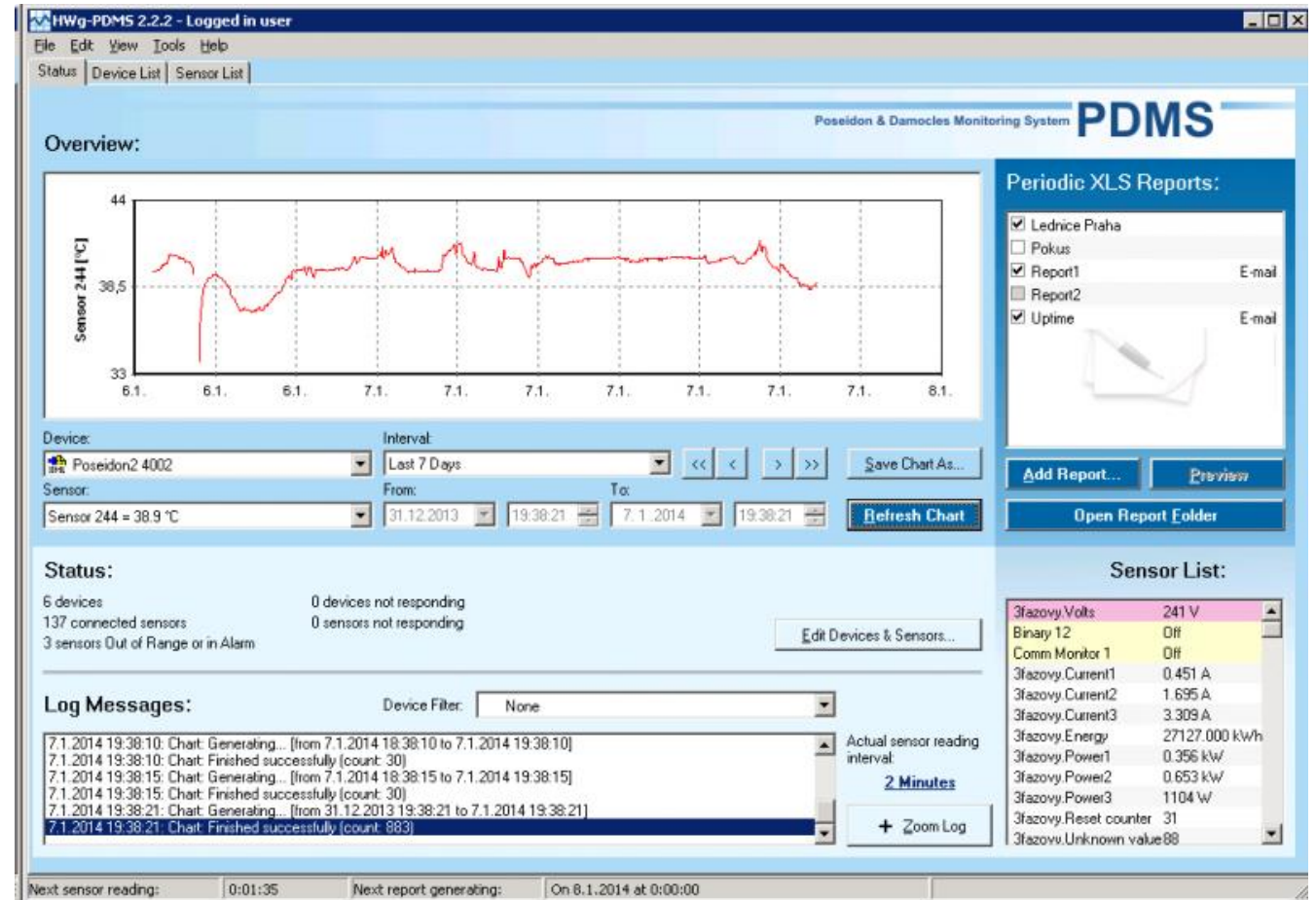
9

www.hw-group.com

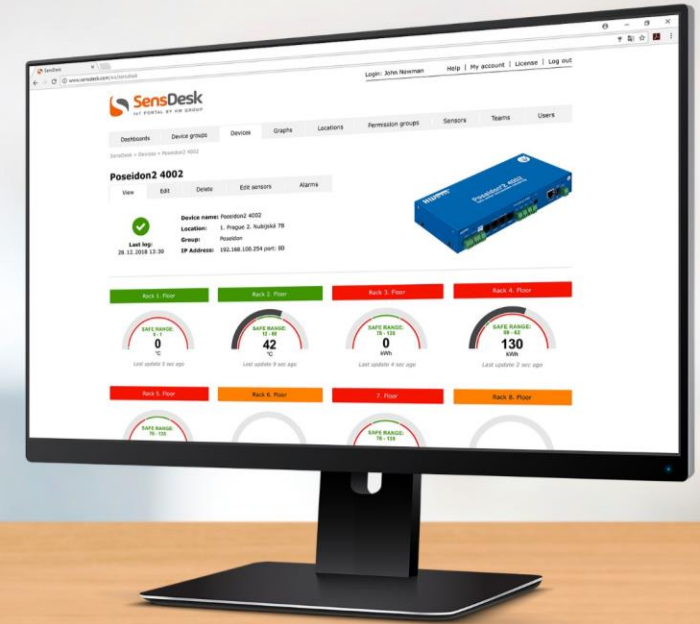
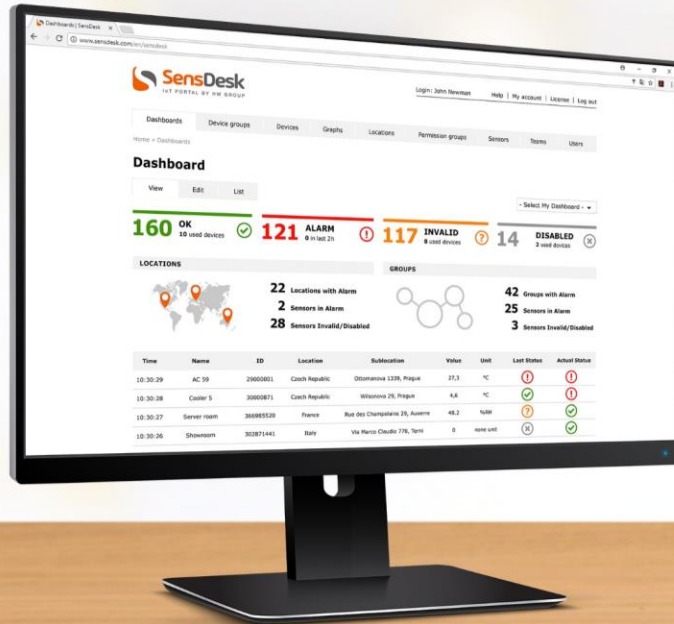
SOFTWARE

HW group software or dozens of third party monitoring apps.

- Windows monitoring SW (PDMS)
- Mass configuration and upgrades
- Tools for sensor calibration
- Free SDK for developers

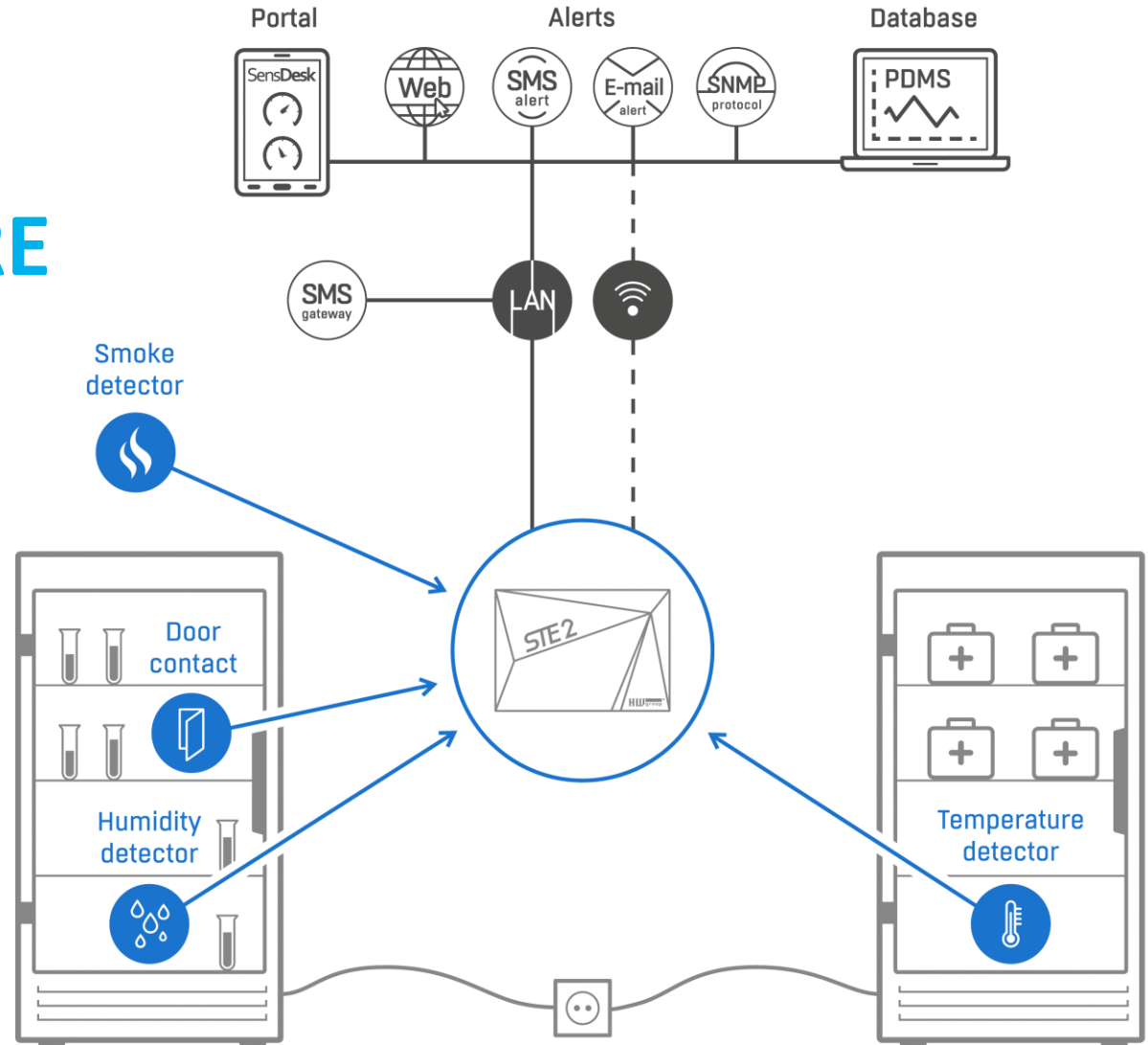


IoT SOLUTIONS



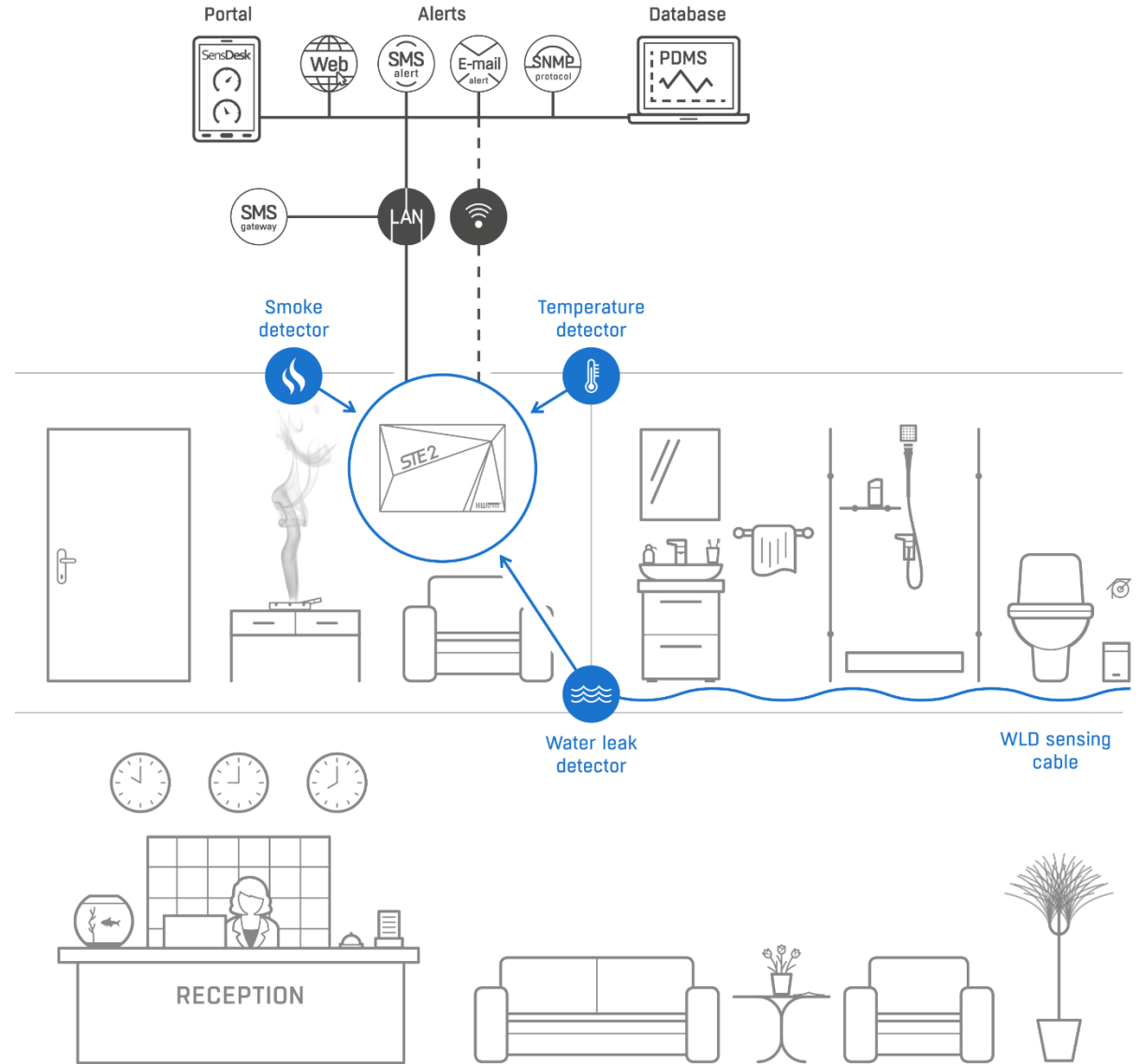
MEDICAL AND HEALTHCARE

Fridge monitoring, fire alarms.



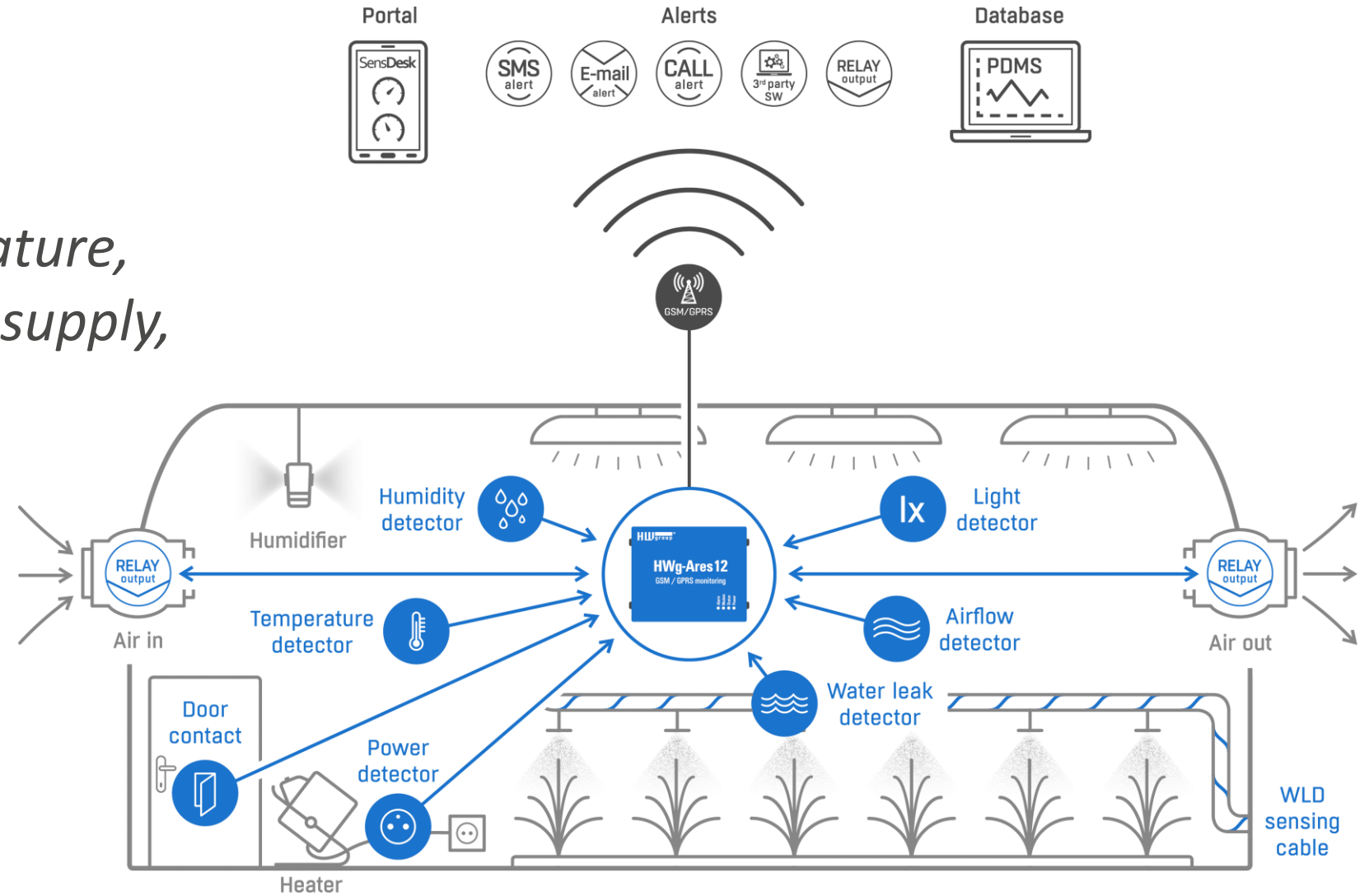
HOTELS AND RESIDENTIAL

Fire, smoke and water leak detection, temperature monitoring



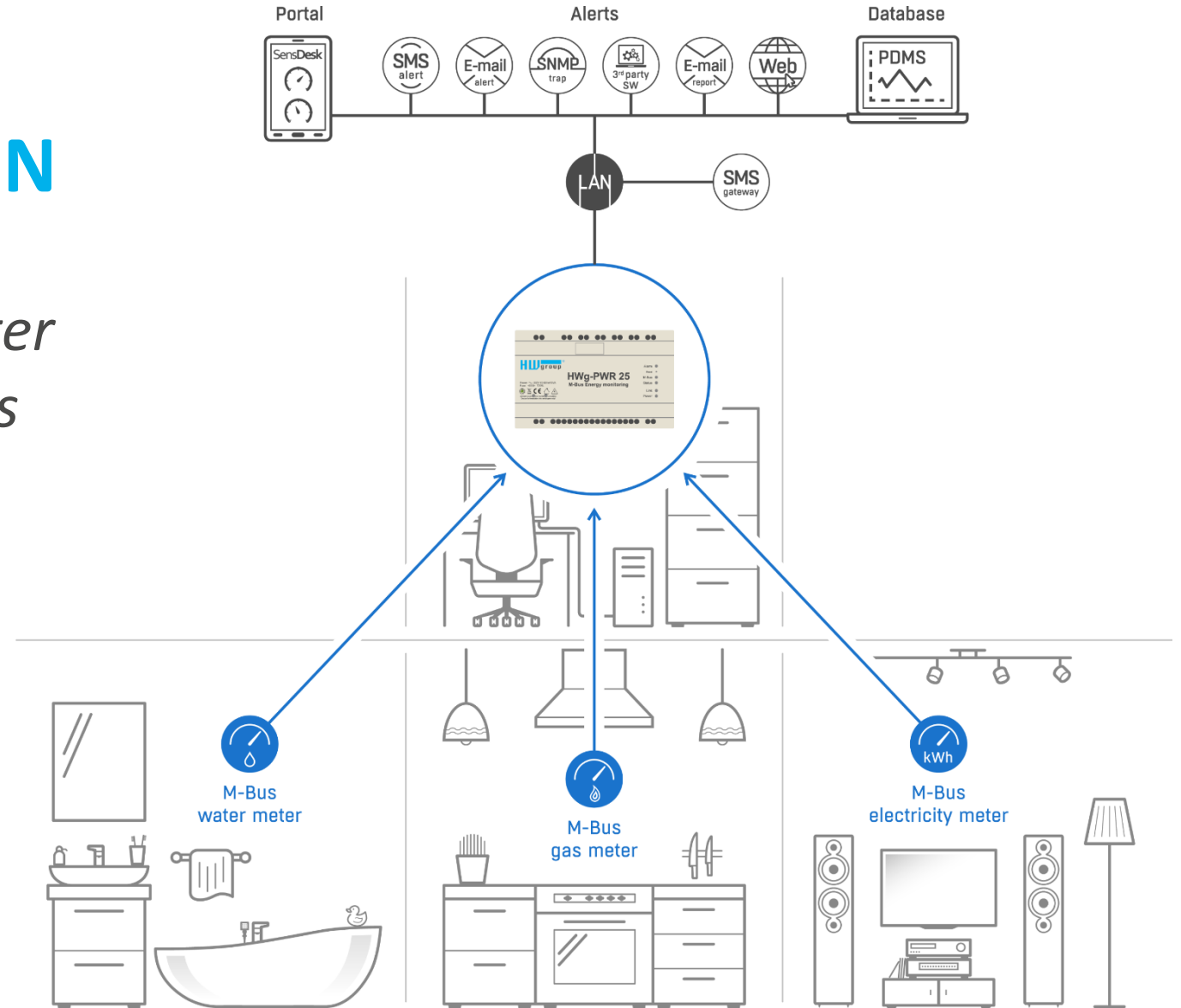
AGRICULTURE

Monitoring of temperature, humidity, light, power supply, airflow and more...



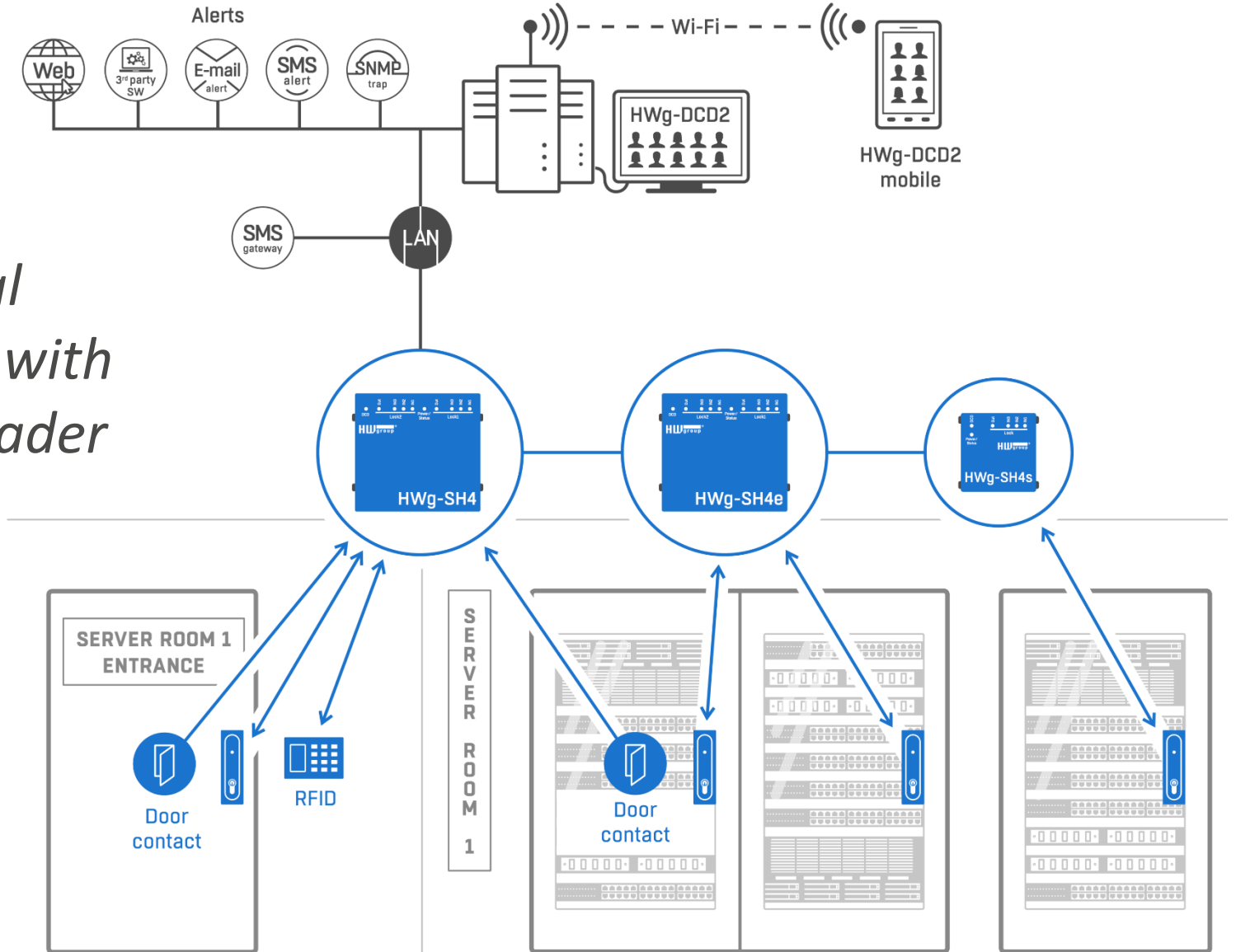
ENERGY CONSUMPTION

Electrical energy, gas and water monitoring for smart buildings and home.



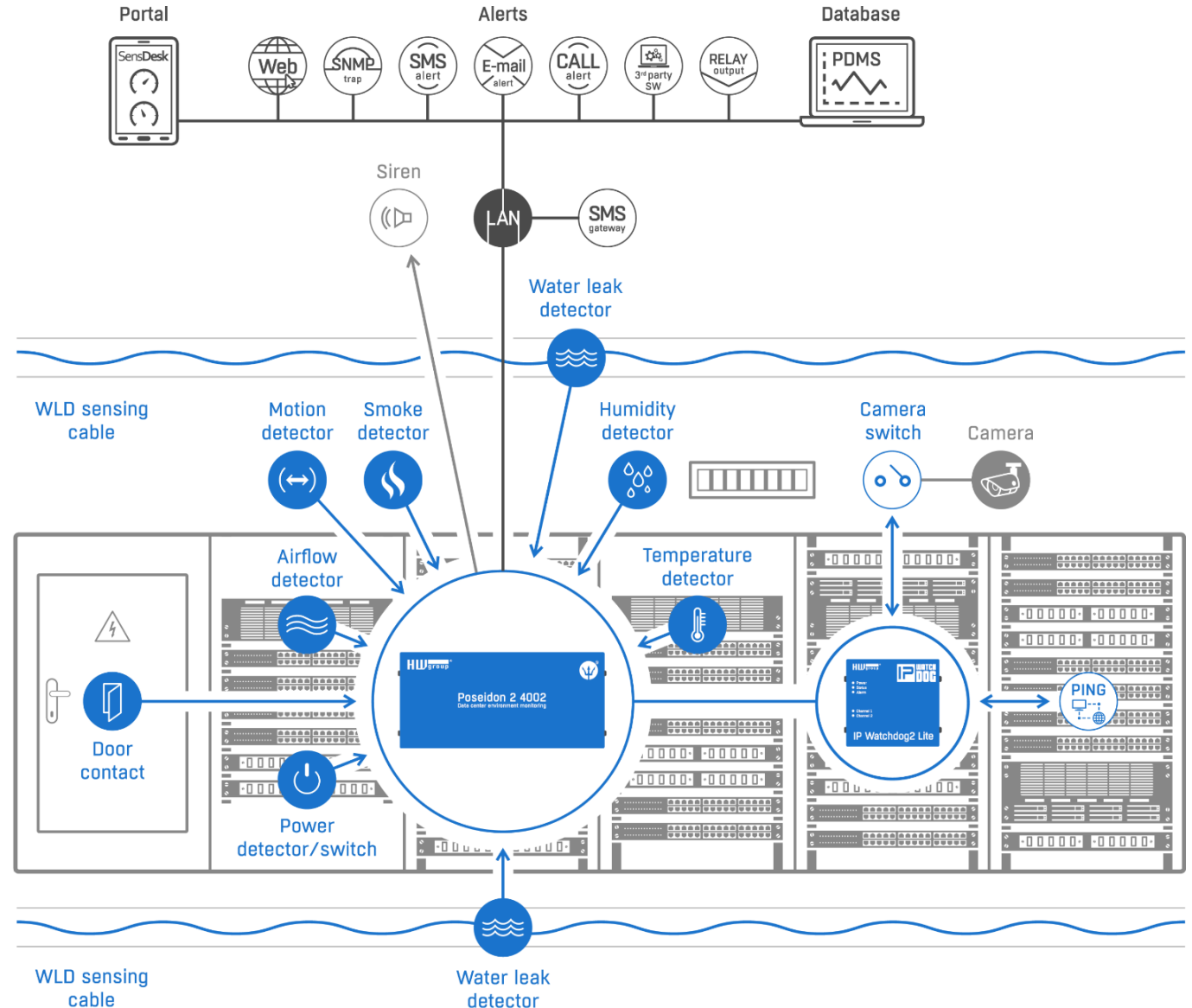
ACCESS CONTROL

Datacentre and residential access control that works with Any lock and RFID card reader



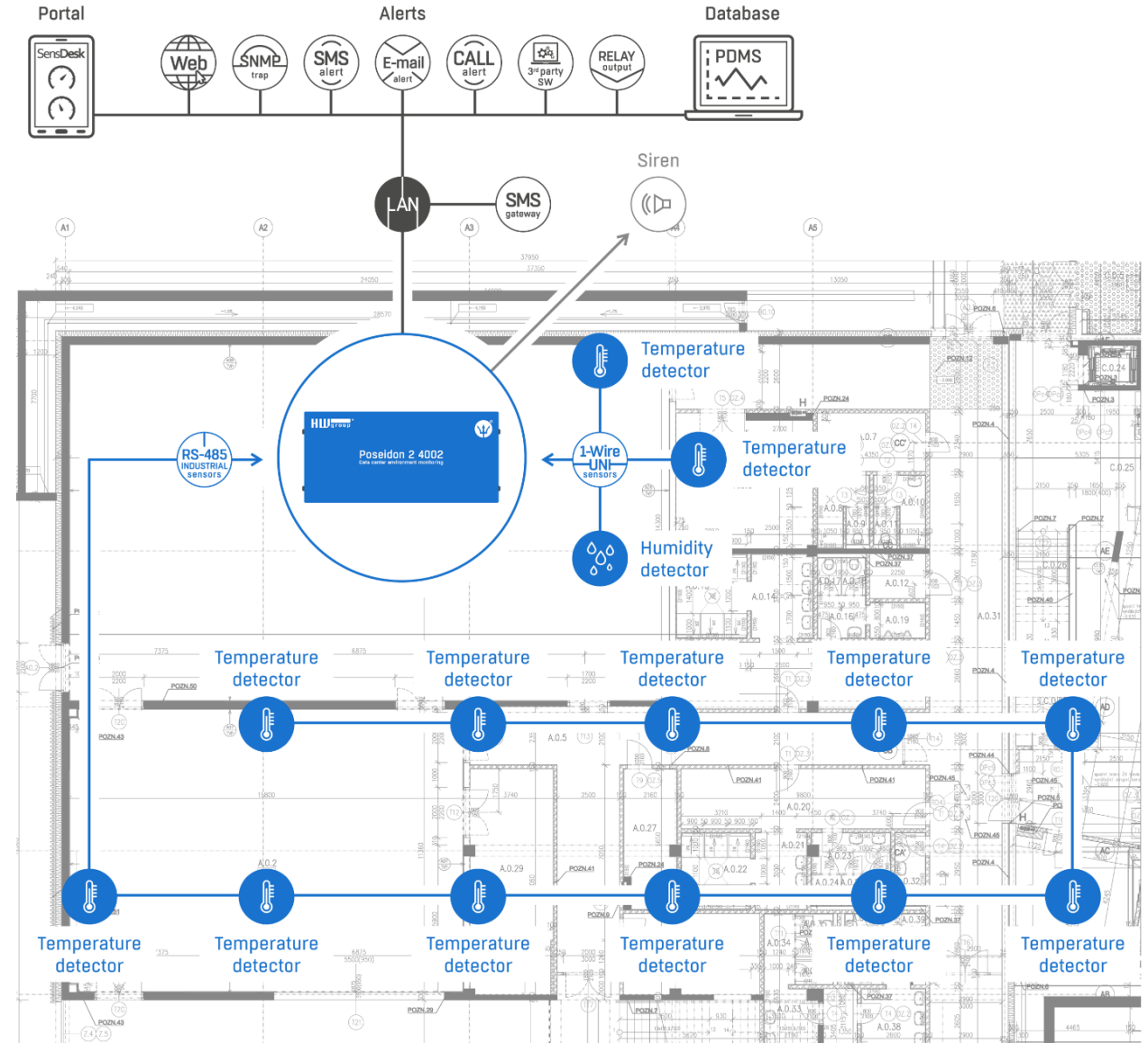
DATACENTERS

Temperature and humidity, door contacts, motion, smoke and water leaks



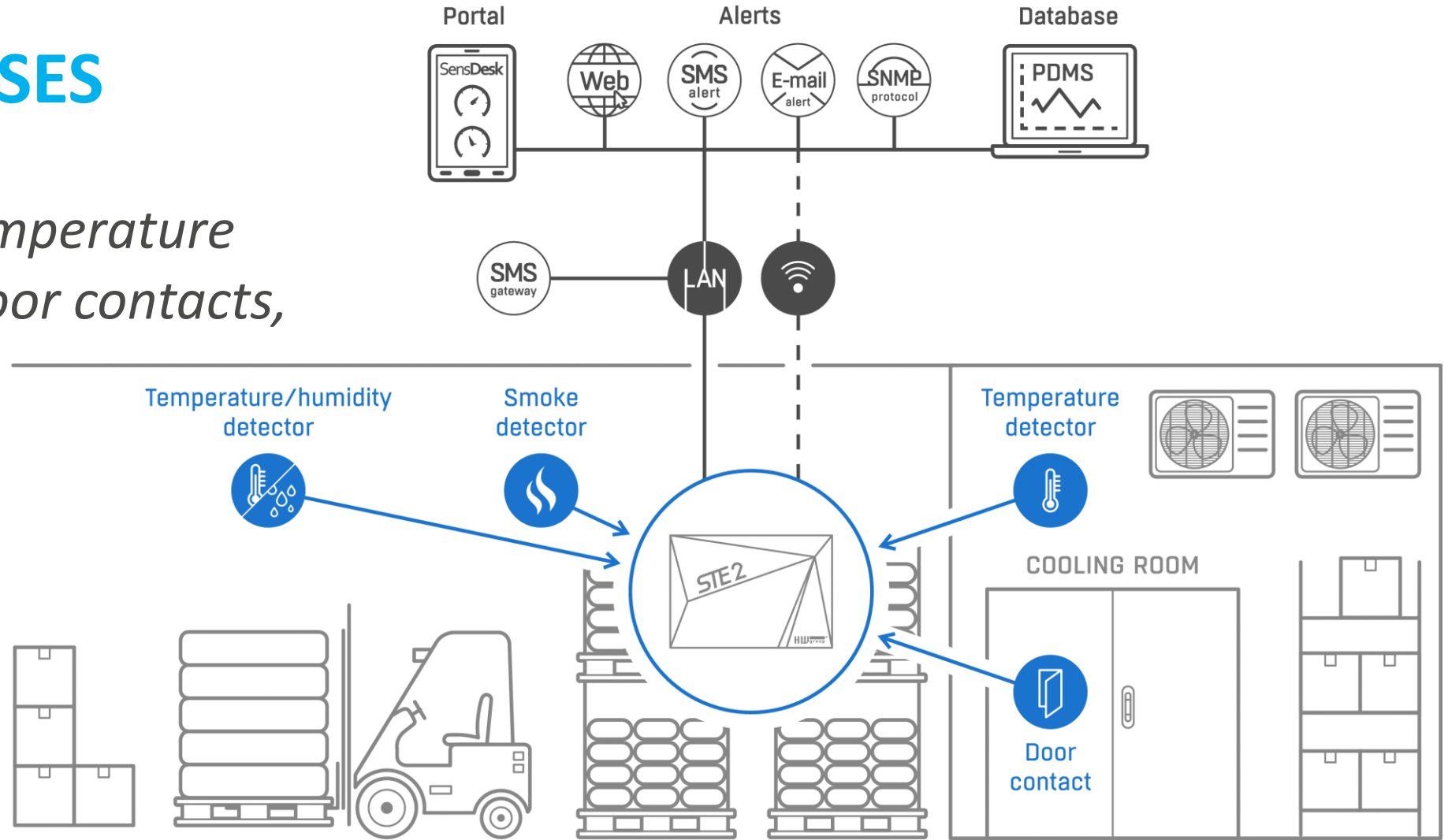
INDUSTRY AND MANUFACTURING

Long range temperature sensors, I/O, water leaks



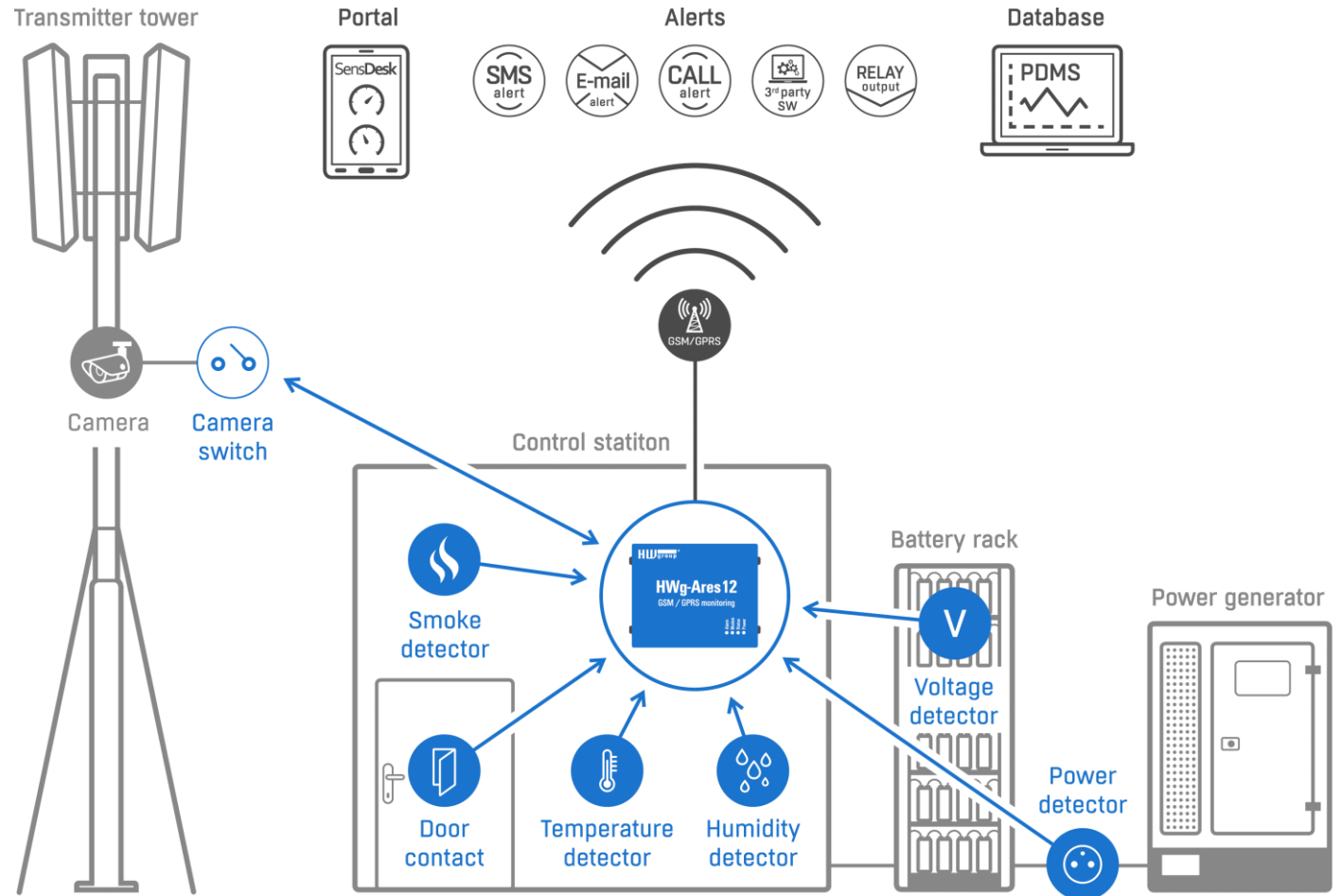
WAREHOUSES

Multi point temperature monitoring, door contacts, smoke, fire



CELL PHONE TOWERS

*Temperature, intrusion,
Smoke, UPS, power supply.*



CUSTOMER REFERENCES

For the last 18 years we were lucky enough to provide services to the following companies.

We would be thrilled if your customers were next.



CUSTOMER REFERENCES SWITZERLAND



*Waterleak Detectors HWg-WLD
at Biozentrum University of Basel*



Wasserleck-Überwachung
in allen Laborräumen mit
HWg-WLD



Temperatur-Überwachung
in ICT-Räumen



Temperatur-Überwachung
in ICT-Räumen mit HWg-STE



Temperatur- und
Feuchtigkeits-Überwachung
im Gotthard- und
Seelisbergtunnel



Temperatur-Überwachung
in ICT-Räumen mit HWg-STE



Temperatur- und
Feuchtigkeits-Überwachung
in Netzwerkschränken



swisscom
Temperatur-Überwachung
in ICT-Räumen mit HWg-STE

Presentations, Catalogs and more:

<https://ch.ingrammicro.eu/microsites/hw-group>

The products can be ordered:

- 1) In the IM web shop: <https://ch.ingrammicro.com/Site/Search#vendorname%3aHW%20group>
- 2) By email to jens.albrecht@ingrammicro.com

For further information and product demos ask:

Jens Albrecht

Presales Cyber Security / IoT

jens.albrecht@ingrammicro.com

Direct 079 287 36 43

Office 041 784 33 00

The background of the image is a dark, futuristic digital space. It features a grid of glowing blue and purple dots that recede into the distance, creating a sense of depth. On the right side, there are vertical columns of binary code (0s and 1s) and some faint, illegible text, suggesting a data center or server environment. The overall color palette is dominated by deep blues and purples.

INGRAM

MICRO[®]

Realize the Promise of Technology